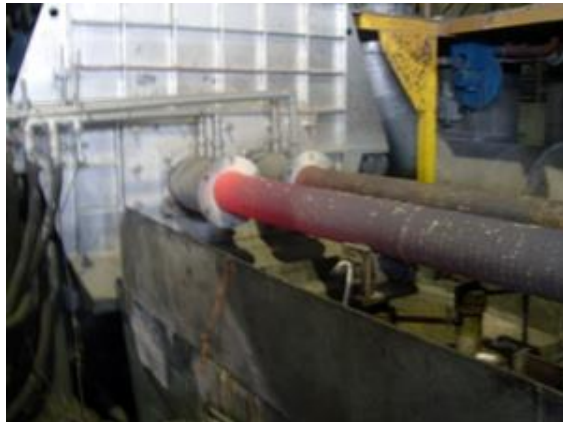


ENVIRONMENTAL INFORMATION SARBAK METAL



ENERGY

The manufacture of semi-finished brass products is very energy-intensive. Electric power is mainly used for the inductive melting furnace in the foundry. Natural gas is mainly used for the heating mould, power of stress relieving annealing furnace and chips drying machine. We always work for reduce the energy level. By appropriate process control and the best-possible planning of the production processes, taking into account energy-saving aspects as well as the optimization of energy-intensive consumer loads, the consumption should be continuously reduced.

Heat is supplied by a natural gas fired hot water boiler system.

We follow our energy consumption data for many years and registration this data.

2016-2018 ELECTRIC AND NATURAL GAS CONSUMPTION DATA

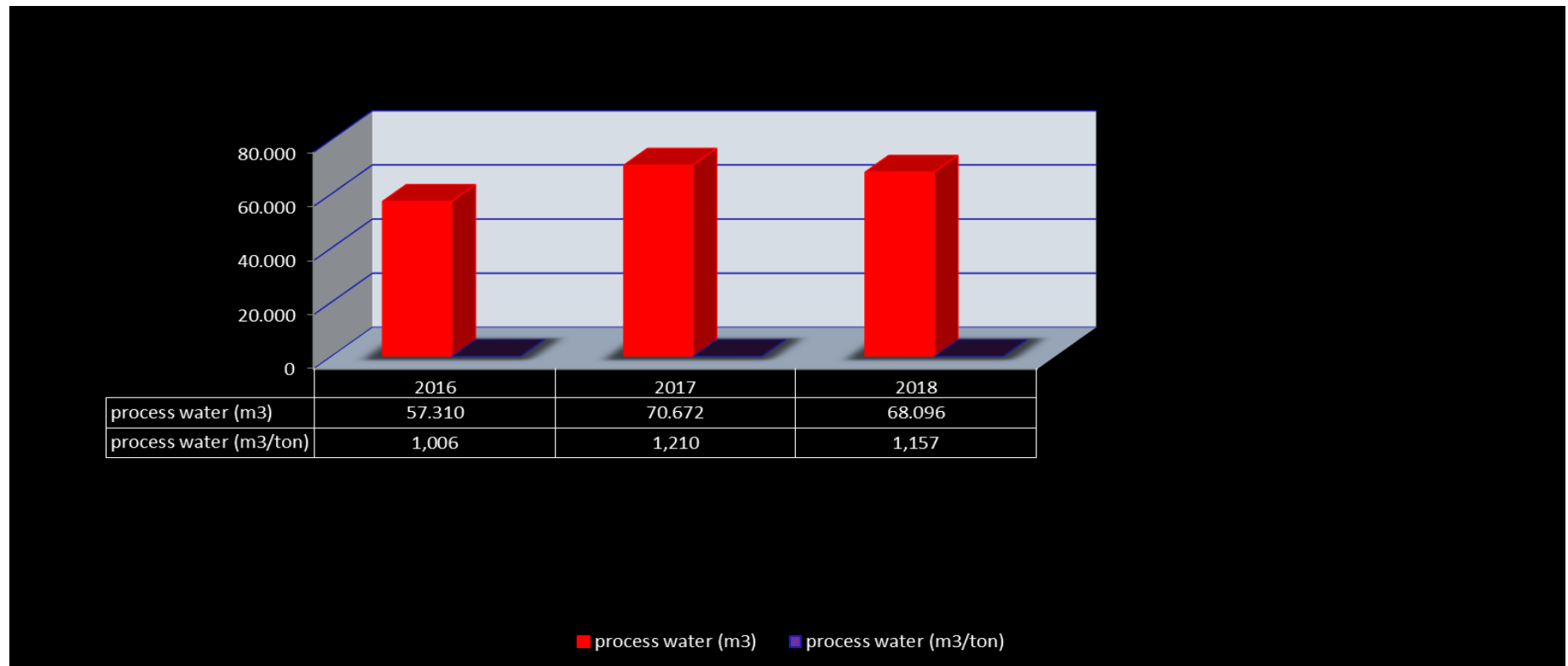


WATER

Process water is supplied from Industrial Free Zone' s underground water source. Our drinking water were obtained by purification underground water until the beginning of 2011. We purchase the drinking water from supplier since 2011.

Our waste water discharge permit obtained from the Ministry of Environment until 2010 with the purified waste water treatment facility and was given to the receiving environment. Our waste water source was joined to the Çerkezköy Industrial Zone's treatment plant.

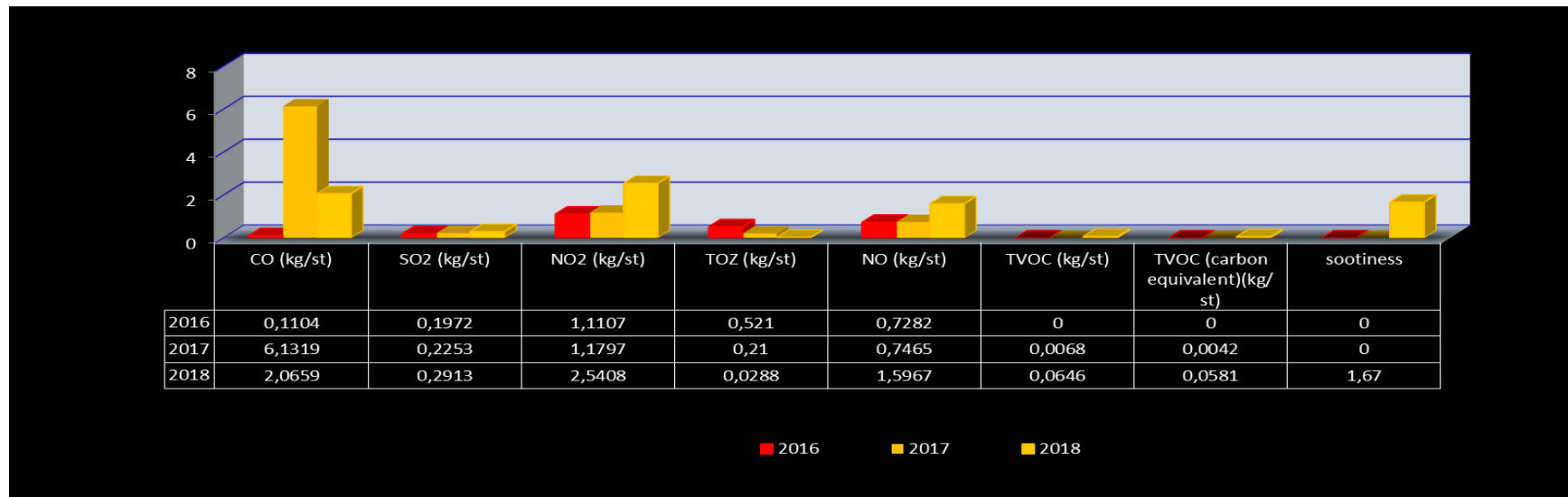
2016-2018 WATER CONSUMPTION DATA



ENVIRONMENTAL DATA

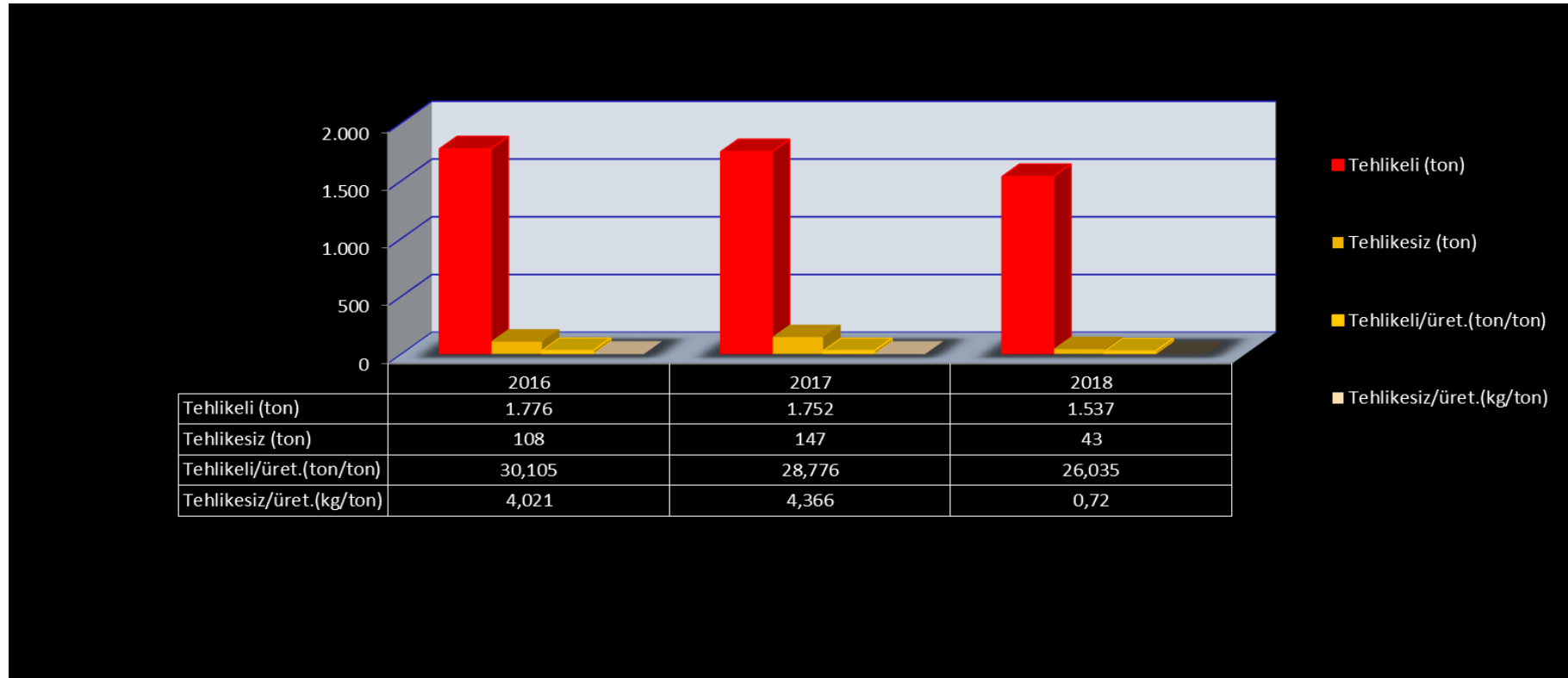
2014, 2016, 2018 YEARS EMISSION RESULT

	2014	2016	2018	LIMIT VALUE
CO (kg/st)	0,1104	6,1319	2,0659	500
SO ₂ (kg/st)	0,1972	0,2253	0,2913	60
NO ₂ (kg/st)	1,1107	1,1797	2,5408	40
TOZ (kg/st)	0,521	0,21	0,0288	10
NO (kg/st)	0,7282	0,7465	1,5967	-
TVOC (kg/st)	0	0,0068	0,0646	-
TVOC (carbon equivalent)(kg/st)	0	0,0042	0,0581	10
sootiness	0	0	1,67	-



2016-2018 HAZARD WASTE DATA

	2016	2017	2018
hazard waste (ton)	1.776	1.752	1.537
Non-hazard waste (ton)	108	147	43
hazard waste / production (ton/ton)	30,105	28,776	26,035
Non-hazard waste / production (kg/ton)	4,021	4,366	0,72



ENVIRONMENTAL GOALS

GOAL
0,1 hour environmental education for employees
Reduce to electric power consumption
Reduce to natural gas consumption
Reduce to auxiliary chemicals usage (salt, borax, coal)
Reduce to water usage
Reduce the waste data (%2)
Keep in corrective and preventive action data at 2 about ISO 14001:2004
Reduce the CO ₂ quantity for reduce our greenhouse gas effect
Direct or indirect complaint data about SARBAK METAL
Reduce to sundry expenses

ÖZGE DELİ
EMS CHIEF

TUĞHAN ÖZÇAMSIRTI
FACTORY MANAGER